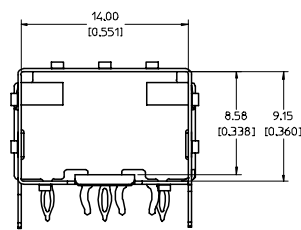
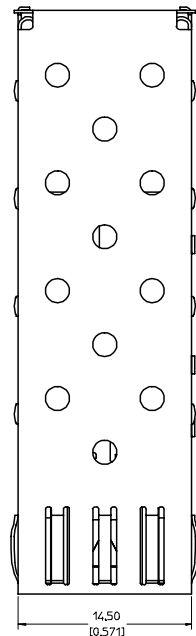
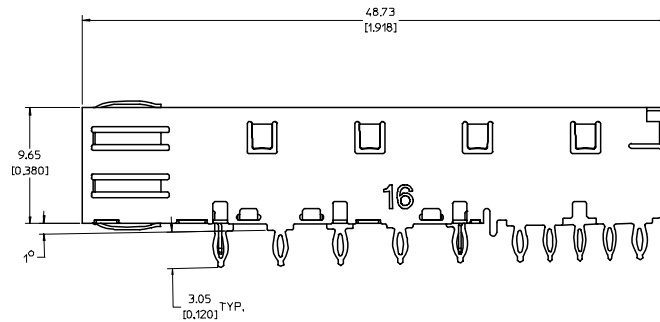
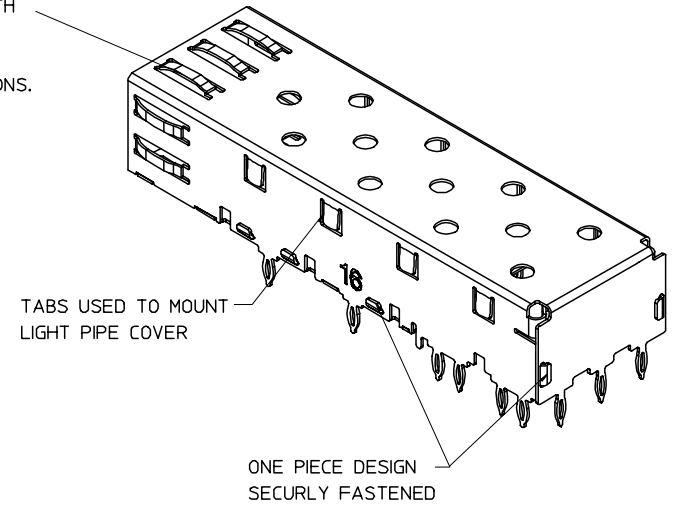


BOTTOM VIEW



SPRING FINGER GASKET WITH TWO POINTS OF CONTACT. COMPLIES WITH (SFP) MSA BOARD AND BEZEL LOCATIONS.



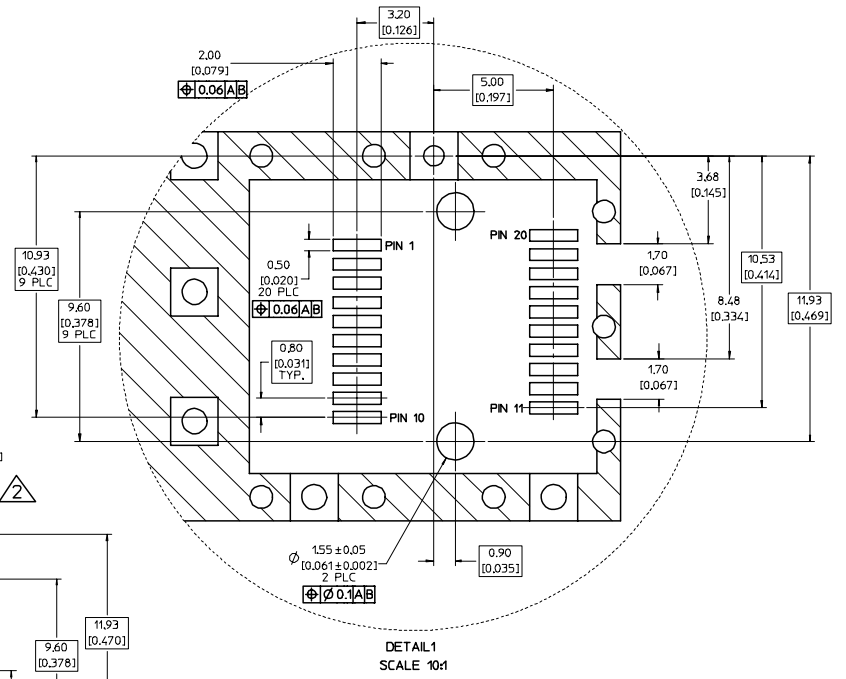
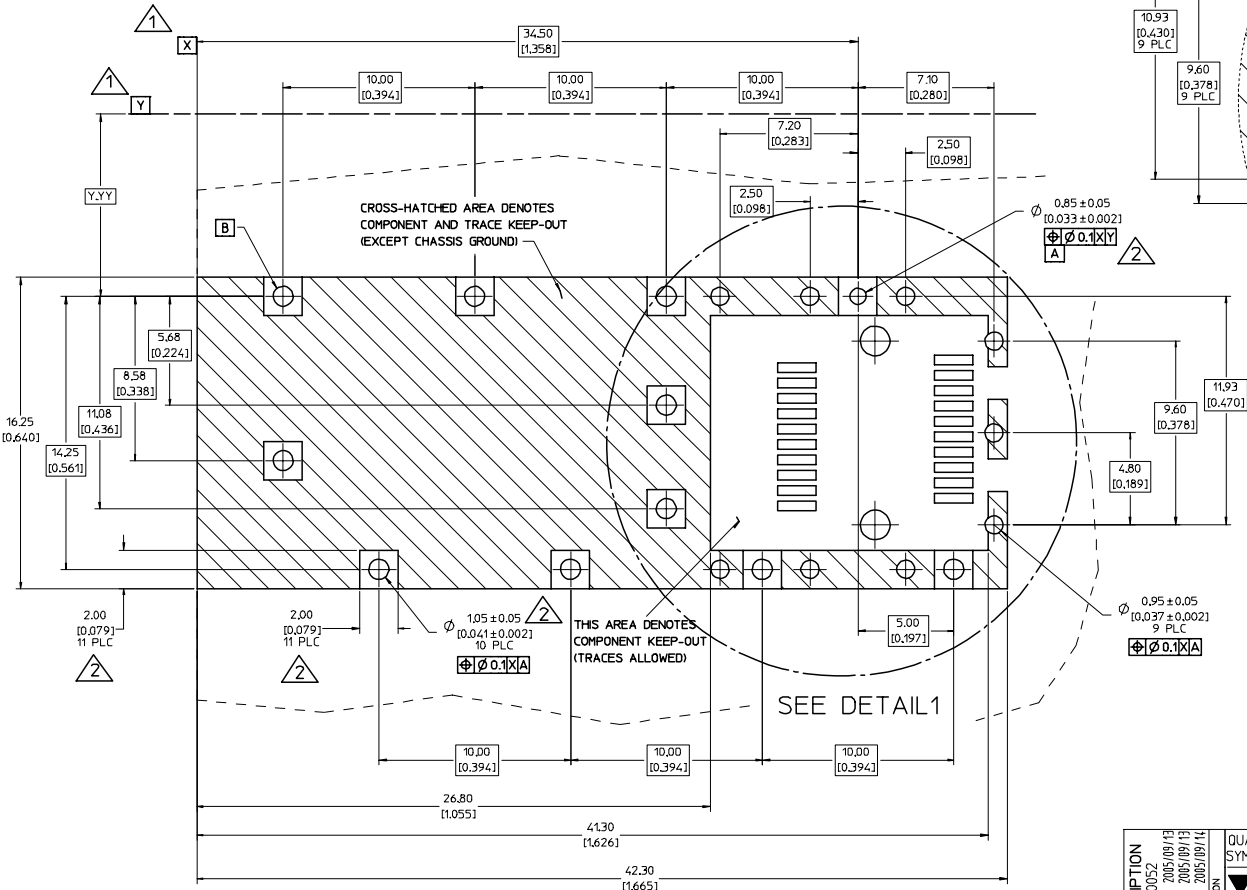
NOTES:

1. PRESS FIT LEGS, 0.120 INCHES LONG. 157 [0.062] MINIMUM PCB THICKNESS.
2. THIS CAGE IS FOR SINGLE SIDED USE ONLY.
3. CAN BE USED WITH THE FOLLOWING LIGHT PIPE PART NUMBERS:
 747260001 - LIGHT PIPE FROM BACK TO TOP (REFER TO DOCUMENT SD-74726-001)
 747260002 - LIGHT PIPE FROM SIDE TO TOP (REFER TO DOCUMENT SD-74726-002)
4. MATERIAL: COPPER ALLOY
 PLATING: PRE-PLATED WITH NICKEL
5. THIS PART MEETS THE RESTRICTION OF HAZARDOUS SUBSTANCES IN ELECTRICAL AND ELECTRONIC EQUIPMENT (ROHS) DIRECTIVE (2002/95/EC).

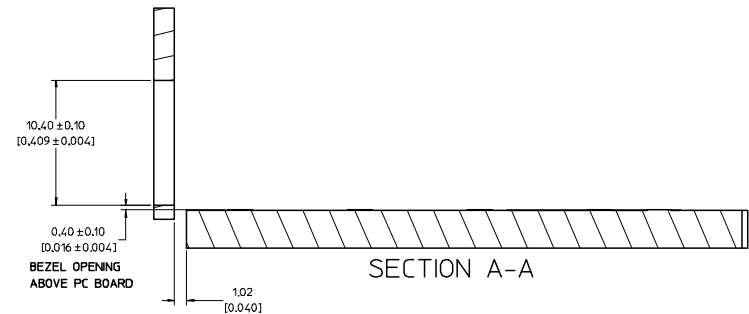
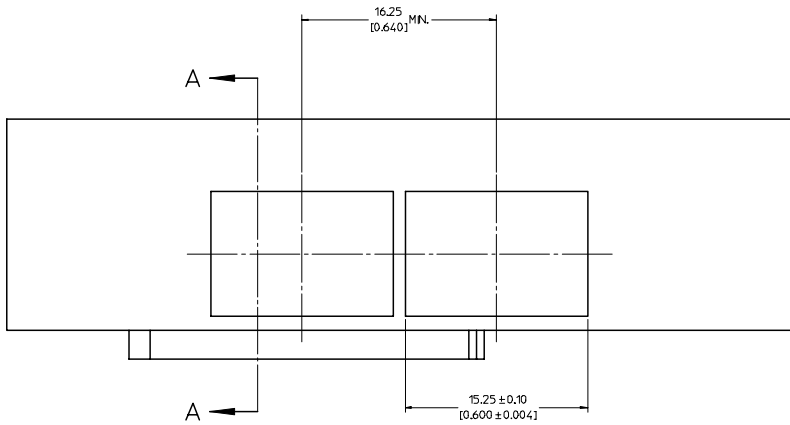
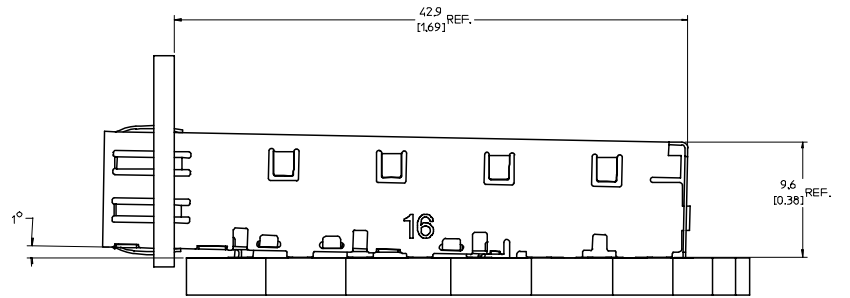
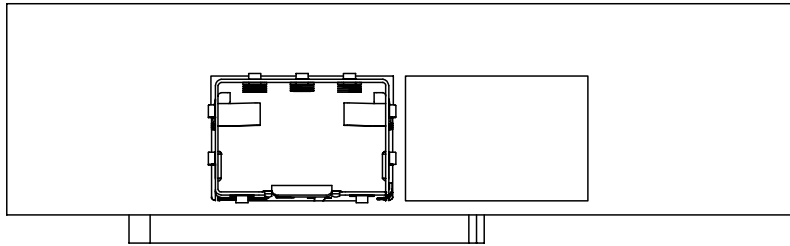
ENTER DESCRIPTION EC NO: UST2006-0052 DRAWN BY: DRANKS MONSON 2005/09/13 CHECKED BY: CHUCK BRUSSELL 2005/09/13 APPROVED BY: BRUSSELL 2005/09/14	QUALITY SYMBOLS	GENERAL TOLERANCES (UNLESS SPECIFIED)	DIMENSION STYLE	SCALE	DESIGN UNITS	THIRD ANGLE PROJECTION	
	$\nabla=0$ $\nabla=0$	mm INCH 4 PLACES ± --- ± --- 3 PLACES ± --- ± .005 2 PLACES ± 0.13 ± .01 1 PLACE ± 0.25 ± --- ANGULAR ± 1 °	MM/IN	5:1	METRIC		
	DRAWN BY: KS IMONSO 2005/09/12 CHECKED BY: BRUSSELL 2005/09/12 APPROVED BY: BRUSSELL 2005/09/12	TITLE: SFP ONE PIECE CAGE PRESS-FIT (0.120 LEGS) FOR PCI		MATERIAL NO: 747370016		DOCUMENT NO: SD-74737-0016	
	DRAFT WHERE APPLICABLE MUST REMAIN WITHIN DIMENSIONS		SIZE D		SHEET NO: 1 OF 3		

MOLEX INCORPORATED
 THIS DRAWING CONTAINS INFORMATION THAT IS PROPRIETARY TO MOLEX INCORPORATED AND SHOULD NOT BE USED WITHOUT WRITTEN PERMISSION

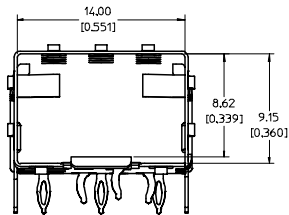
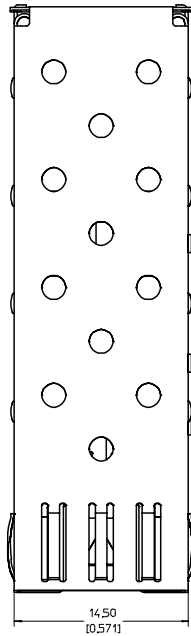
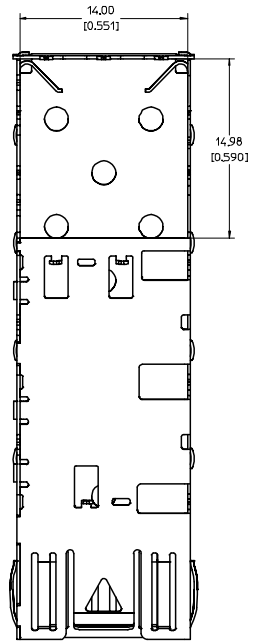
- 1 DATUM AND BASIC DIMENSIONS ESTABLISHED BY CUSTOMER.
- 2 PADS AND VIAS ARE CHASSIS GROUND.
- 3 HOLE LAYOUT SHOWN IS FOR SINGLE SIDED MOUNTING ONLY.
4. CONNECTOR PAD LAYOUT PER SFP MSA. WILL ACCOMMODATE MOLEX CONNECTOR SERIES 74441 OR EQUIVALENT.



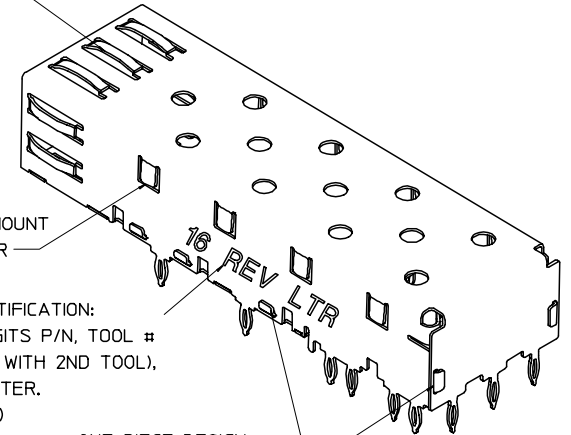
ENTER DESCRIPTION EC NO: UST2006-0052 DRINKS MONSON 2005/09/13 CHKD: BRUSSELL 2005/09/13 APPR: BRUSSELL 2005/09/14	QUALITY SYMBOLS	GENERAL TOLERANCES (UNLESS SPECIFIED)	DIMENSION STYLE	SCALE	DESIGN UNITS	THIRD ANGLE PROJECTION										
	$\nabla=0$ $\nabla=0$	<table border="1"> <tr><th>mm</th><th>INCH</th></tr> <tr><td>± 0.15</td><td>± 0.005</td></tr> <tr><td>± 0.13</td><td>± 0.01</td></tr> <tr><td>± 0.25</td><td>± 0.01</td></tr> <tr><td>ANGULAR ± 1°</td><td></td></tr> </table>	mm	INCH	± 0.15	± 0.005	± 0.13	± 0.01	± 0.25	± 0.01	ANGULAR ± 1°		MM/IN	8:1	METRIC	
	mm	INCH														
	± 0.15	± 0.005														
± 0.13	± 0.01															
± 0.25	± 0.01															
ANGULAR ± 1°																
DRAWN BY: KS IMONSO CHECKED BY: BRUSSELL APPROVED BY: BRUSSELL	DATE: 2005/09/12 DATE: 2005/09/12 DATE: 2005/09/12	MATERIAL NO: 747370016 DOCUMENT NO: SD-74737-0016	TITLE: SFP ONE PIECE CAGE PRESS-FIT (0.120 LEGS) FOR PCI MOLEX MOLEX INCORPORATED	SHEET NO: 2 OF 3												
DRAFT WHERE APPLICABLE MUST REMAIN WITHIN DIMENSIONS	SIZE: D	THIS DRAWING CONTAINS INFORMATION THAT IS PROPRIETARY TO MOLEX INCORPORATED AND SHOULD NOT BE USED WITHOUT WRITTEN PERMISSION														



ENTER DESCRIPTION EC NO: UST2006-0052 DRAWN BY: DRINKS MONSON 2005/09/13 CHECKED BY: CHUCK BRUSSELL 2005/09/13 APPR: BRUSSELL 2005/09/14 DESCRIPTION: A	QUALITY SYMBOLS	GENERAL TOLERANCES (UNLESS SPECIFIED)		DIMENSION STYLE		SCALE	DESIGN UNITS	THIRD ANGLE PROJECTION	
	$\nabla=0$ $\nabla=0$	mm	INCH	MM/IN		5:1	METRIC		
		4 PLACES ± --- ± ---	3 PLACES ± --- ± .005	DRAWN BY	DATE	TITLE			
		2 PLACES ± 0.13 ± .01	1 PLACE ± 0.25 ± ---	CHECKED BY	DATE	SFP ONE PIECE CAGE PRESS-FIT (0.120 LEGS) FOR PCI			
	ANGULAR ± 1 °	APPROVED BY		DATE	MOLEX INCORPORATED				
		MATERIAL NO.		747370016	DOCUMENT NO.		SD-74737-0016		
DRAFT WHERE APPLICABLE MUST REMAIN WITHIN DIMENSIONS		SIZE		D	THIS DRAWING CONTAINS INFORMATION THAT IS PROPRIETARY TO MOLEX INCORPORATED AND SHOULD NOT BE USED WITHOUT WRITTEN PERMISSION				
						SHEET NO.		3 OF 3	



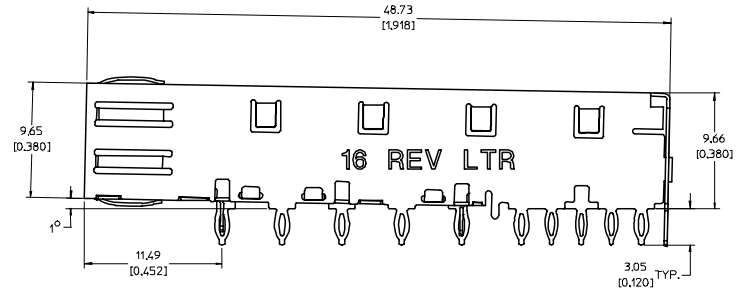
SPRING FINGER GASKET WITH TWO POINTS OF CONTACT. COMPLIES WITH (SFP) MSA BOARD AND BEZEL LOCATIONS.



TABS USED TO MOUNT LIGHT PIPE COVER

CAGE IDENTIFICATION:
LAST 2 DIGITS P/N, TOOL # (BEGINNING WITH 2ND TOOL), & REV LETTER.
(ex: 16-2 X)

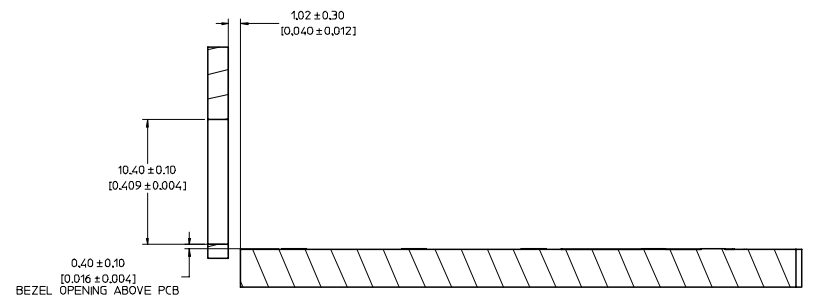
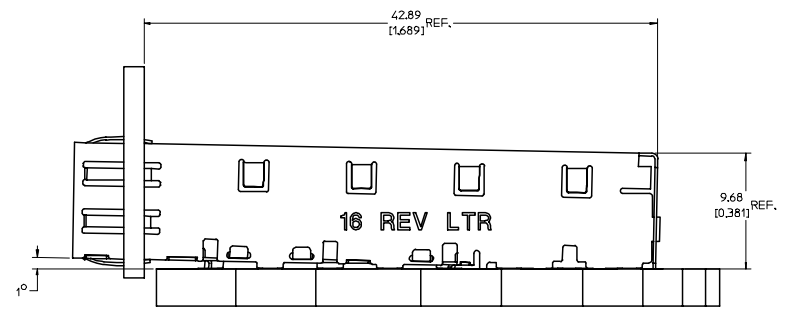
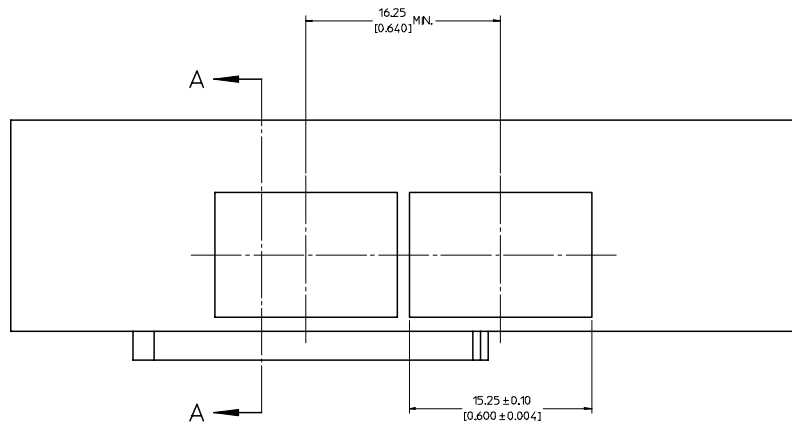
ONE PIECE DESIGN SECURELY FASTENED



NOTES:

- PRESS FIT LEGS, 0.120 INCHES LONG. 157 [0.062] MINIMUM PCB THICKNESS.
- THIS CAGE IS FOR SINGLE SIDED USE ONLY.
- CAN BE USED WITH THE FOLLOWING LIGHT PIPE PART NUMBERS:
747260001 - LIGHT PIPE FROM BACK TO TOP (REFER TO DOCUMENT SD-74726-001)
747260002 - LIGHT PIPE FROM SIDE TO TOP (REFER TO DOCUMENT SD-74726-002)
- MATERIAL: COPPER ALLOY
PLATING: PRE-PLATED WITH NICKEL
- THIS PART MEETS THE RESTRICTION OF HAZARDOUS SUBSTANCES IN ELECTRICAL AND ELECTRONIC EQUIPMENT (ROHS) DIRECTIVE (2002/95/EC).

UPDATED 3D MODELS UST/2008-0147 DRWN:CCOX 2007/09/28 CHKD: 2007/10/02 APPR:RMAHMOOD 2007/10/03 REV DESCRIPTION	QUALITY SYMBOLS	GENERAL TOLERANCES (UNLESS SPECIFIED)	DIMENSION STYLE	SCALE	DESIGN UNITS	THIRD ANGLE PROJECTION																		
	$\nabla=0$ $\nabla=0$	<table border="1"> <tr> <th></th> <th>MM</th> <th>INCH</th> </tr> <tr> <td>4 PLACES</td> <td>± .005</td> <td>± .0005</td> </tr> <tr> <td>3 PLACES</td> <td>± .005</td> <td>± .0005</td> </tr> <tr> <td>2 PLACES</td> <td>± 0.13</td> <td>± .01</td> </tr> <tr> <td>1 PLACE</td> <td>± 0.25</td> <td>± .01</td> </tr> <tr> <td>ANGULAR</td> <td colspan="2">± 1 °</td> </tr> </table>		MM	INCH	4 PLACES	± .005	± .0005	3 PLACES	± .005	± .0005	2 PLACES	± 0.13	± .01	1 PLACE	± 0.25	± .01	ANGULAR	± 1 °		MM/IN	5:1	METRIC	
		MM	INCH																					
	4 PLACES	± .005	± .0005																					
3 PLACES	± .005	± .0005																						
2 PLACES	± 0.13	± .01																						
1 PLACE	± 0.25	± .01																						
ANGULAR	± 1 °																							
DRAFT WHERE APPLICABLE MUST REMAIN WITHIN DIMENSIONS	DRAWN BY: CCOX CHECKED BY: RMAHMOOD APPROVED BY: RMAHMOOD DATE: 2006/10/30 DATE: 2006/10/30 DATE: 2006/10/30	MATERIAL NO.: 747370016 DOCUMENT NO.: SD-74737-016	TITLE: SFP ONE PIECE CAGE PRESS-FIT (0.120 LEGS) FOR PCI MOLEX INCORPORATED	SHEET NO.: 1 OF 4																				
	THIS DRAWING CONTAINS INFORMATION THAT IS PROPRIETARY TO MOLEX INCORPORATED AND SHOULD NOT BE USED WITHOUT WRITTEN PERMISSION																							



SECTION A-A

UPDATED 3D MODELS UST/2008-044 DRWN:CCOX 2007/09/28 CHKD: 2007/10/02 APPR:RMAHMOOD 2007/10/03	QUALITY SYMBOLS	GENERAL TOLERANCES (UNLESS SPECIFIED)	DIMENSION STYLE	SCALE	DESIGN UNITS	THIRD ANGLE PROJECTION																														
	$\nabla=0$ $\nabla=0$	<table border="1"> <tr> <th></th> <th>mm</th> <th>INCH</th> </tr> <tr> <td>4 PLACES ±</td> <td>---</td> <td>---</td> </tr> <tr> <td>3 PLACES ±</td> <td>---</td> <td>±.005</td> </tr> <tr> <td>2 PLACES ±</td> <td>0.13</td> <td>±.01</td> </tr> <tr> <td>1 PLACE ±</td> <td>0.25</td> <td>---</td> </tr> <tr> <td>ANGULAR ±</td> <td colspan="2">1°</td> </tr> </table>		mm	INCH	4 PLACES ±	---	---	3 PLACES ±	---	±.005	2 PLACES ±	0.13	±.01	1 PLACE ±	0.25	---	ANGULAR ±	1°		<table border="1"> <tr> <th>MM/IN</th> <th>DATE</th> </tr> <tr> <td>DRAWN BY</td> <td>2006/10/30</td> </tr> <tr> <td>CHECKED BY</td> <td>DATE</td> </tr> <tr> <td>RMAHMOOD</td> <td>2006/10/30</td> </tr> <tr> <td>APPROVED BY</td> <td>DATE</td> </tr> <tr> <td>RMAHMOOD</td> <td>2006/10/30</td> </tr> </table>	MM/IN	DATE	DRAWN BY	2006/10/30	CHECKED BY	DATE	RMAHMOOD	2006/10/30	APPROVED BY	DATE	RMAHMOOD	2006/10/30	5:1	METRIC	
		mm	INCH																																	
	4 PLACES ±	---	---																																	
3 PLACES ±	---	±.005																																		
2 PLACES ±	0.13	±.01																																		
1 PLACE ±	0.25	---																																		
ANGULAR ±	1°																																			
MM/IN	DATE																																			
DRAWN BY	2006/10/30																																			
CHECKED BY	DATE																																			
RMAHMOOD	2006/10/30																																			
APPROVED BY	DATE																																			
RMAHMOOD	2006/10/30																																			
DESCRIPTION	DRAFT WHERE APPLICABLE MUST REMAIN WITHIN DIMENSIONS	MATERIAL NO.	TITLE SFP ONE PIECE CAGE PRESS-FIT (0.120 LEGS) FOR PCI MOLEX INCORPORATED																																	
REV		SIZE	DOCUMENT NO. SD-74737-016 SHEET NO. 3 OF 4																																	
			THIS DRAWING CONTAINS INFORMATION THAT IS PROPRIETARY TO MOLEX INCORPORATED AND SHOULD NOT BE USED WITHOUT WRITTEN PERMISSION																																	

